



Bari
S.I.C.O.B.

SPRING MEETING

18 - 19 MAGGIO 2023
THE NICOLAUS HOTEL

CONDIVIDERE PER CRESCERE
Strategie di integrazione
in Chirurgia Bariatrica

Presidente del Congresso
ANTONIO BRAUN

Risultati a breve e lungo termine della Endorevisionale

V. BOVE

**FONDAZIONE POLICLINICO
A.GEMELLI IRCCS**

RYGB

ORIGINAL ARTICLE

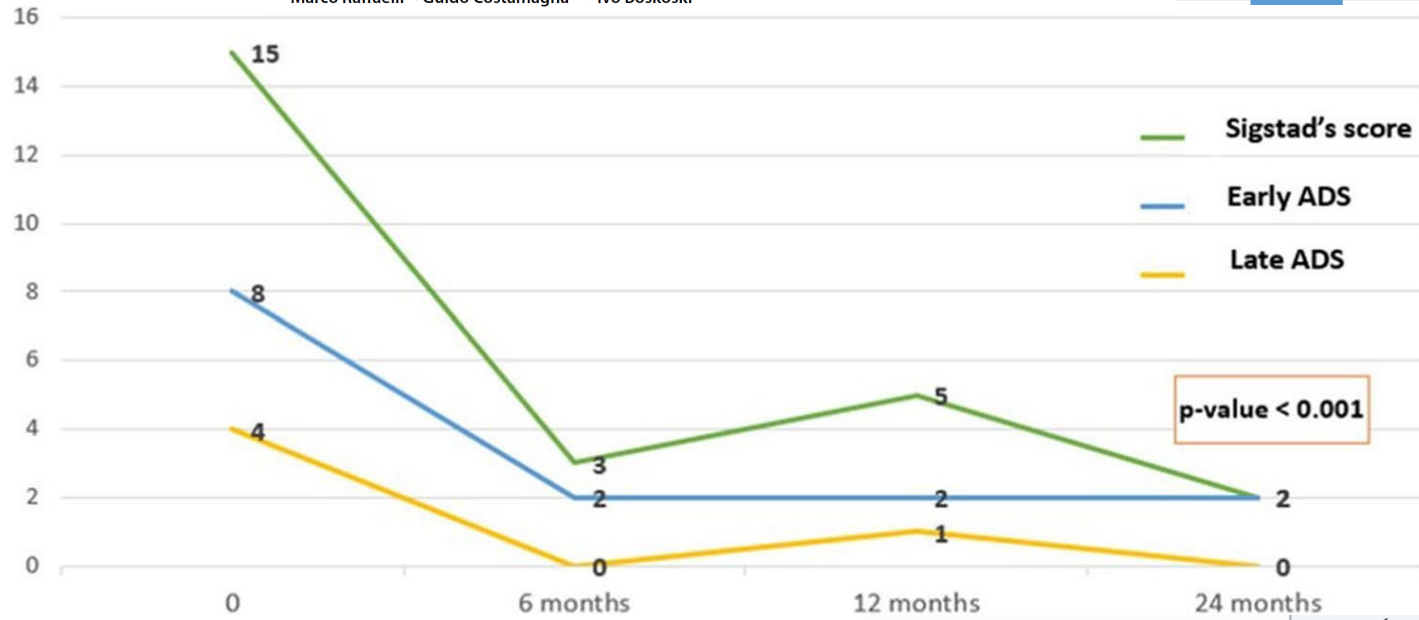
Five-year outcomes of transoral outlet reduction for the treatment of weight regain after Roux-en-Y gastric bypass

Pichamol Jirapinyo, MD, MPH,¹ Nitin Kumar, MD,² Mohd Amer AlSamman, MD,³ Christopher C. Thompson, MD, MSc¹

Boston, Massachusetts; Effingham, Illinois; Providence, Rhode Island, USA

Long-term Outcomes of Transoral Outlet Reduction (TORe) for Dumping Syndrome and Weight Regain After Roux-en-Y Gastric Bypass *Obes. Surg* 2023

Valerio Pontecorvi^{1,2} · Maria Valeria Matteo^{1,2} · Vincenzo Bove^{1,2} · Martina De Siena^{1,2} · Giulia Giannetti^{1,2} · Giorgio Carlino^{1,2} · Giulia Polidori³ · Laila Vinti³ · Giulia Angelini⁴ · Amerigo Iaconelli⁴ · Pietro Familiari^{1,2} · Marco Raffaelli⁵ · Guido Costamagna^{1,2} · Ivo Boškoski^{1,2}



Dolan, et al; Endoscopic versus surgical gastrojejun revision for weight gain in Roux-en-Y gastric bypass patients: 5-year safety and efficacy comparison. *Gastrointestinal Endoscopy*. 2021.

TABLE 1. Baseline characteristics of the 331 patients included in the study

Characteristics	Value
Age, y	50 ± 11
Sex, female	284 (86)
Pre-RYGB weight, kg	139.3 ± 31.4
Nadir weight, kg	84.1 ± 21.3
Weight at initial TORe, kg	110.0 ± 26.3
Body mass index at initial TORe, kg/m ²	40.1 ± 9.1
Amount of weight regain (% from maximal lost weight)	51.0 ± 45.4
Duration from RYGB to initial TORe, y	9.3 ± 4.7
Pre-TORe GJA diameter, mm	23.4 ± 6.0
Pre-TORe pouch length, cm	4.4 ± 1.8

Values are mean ± standard deviation or n (%). GJA, Gastrojejun anastomosis; RYGB, Roux-en-Y gastric bypass; TORe, transoral outlet reduction.

	ENDO	SURGICAL	p
rs	11.5% TBWL	13.1% TBWL	0.67
events	6.5%	29.0%	0.04
Safety profile	0% SAE rate	19.4% SAE rate	0.024

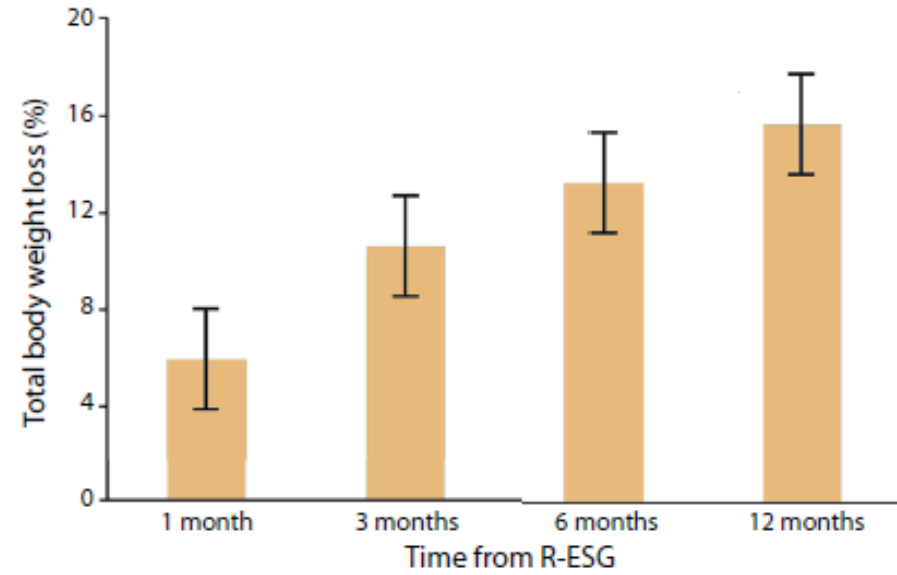
LSG

ORIGINAL ARTICLE: Clinical Endoscopy

Revisional endoscopic sleeve gastroplasty of laparoscopic sleeve gastrectomy: an international, multicenter study

Daniel B. Maselli, MD,¹ Aayed R. Alqahtani, MD,² Barham K. Abu Dayyeh, MD, MPH,^{1*} Mohamed Elahmedi, MBBS,² Andrew C. Storm, MD,¹ Reem Matar, B.Sc,¹ Jose Nieto, DO,³ Andre Teixeira, MD,⁴ Maryam Al Khatry, MD,⁵ Manoel Galvao Neto, MD, MSc,⁶ Vivek Kumbhari, MD,⁷ Eric J. Vargas, MD,¹ Veeravich Jaruvongyanich, MD,¹ Manpreet S. Mundi, MD,⁸ Ameya Deshmukh, DO,³ Mohamad I. Itani, MD,⁷ Jad Farha, MD,⁷ Christopher G. Chapman, MD,⁹ Reem Sharaiha, MD, MSc¹⁰

Rochester, Minnesota; Jacksonville, Orlando, Florida; Baltimore, Maryland; Chicago, Illinois; New York, New York, USA; Riyadh, Saudi Arabia; Ras Al Khaimah, United Arab Emirates; São José do Rio Preto, Brazil



ESG

	1 month	3 months	6 months	12 months
Overall %TBWL	15.2% ± 8.0	19.0% ± 8	18.2% ± 8.1	18.7% ± 6.2
Re-ESG %TBWL	10.3% ± 6	13.2% ± 6.4	13.6% ± 7.7	14.1% ± 7.5
Overall %EWL	47.1% ± 21.3	57.1% ± 21.9	53.8% ± 21.9	55.5% ± 18.5
Re-ESG %EWL	38.0% ± 17.2	47.4% ± 21.7	46.2% ± 22.1	47.8% ± 24.9
BAROS score	3.6 ± 1.5	4.2 ± 1.6	4.2 ± 2.0	4.1 ± 1.8
Values are mean ± standard deviation.				



S.I.C.O.B.

Bari

SPRING MEETING

18 - 19 MAGGIO 2023

THE NICOLAUS HOTEL

CONDIVIDERE PER CRESCERE

Strategie di integrazione
in Chirurgia Bariatica

Presidente del Congresso
ANTONIO BRAUN

Grazie